

# BUSD Student Trends and Projections

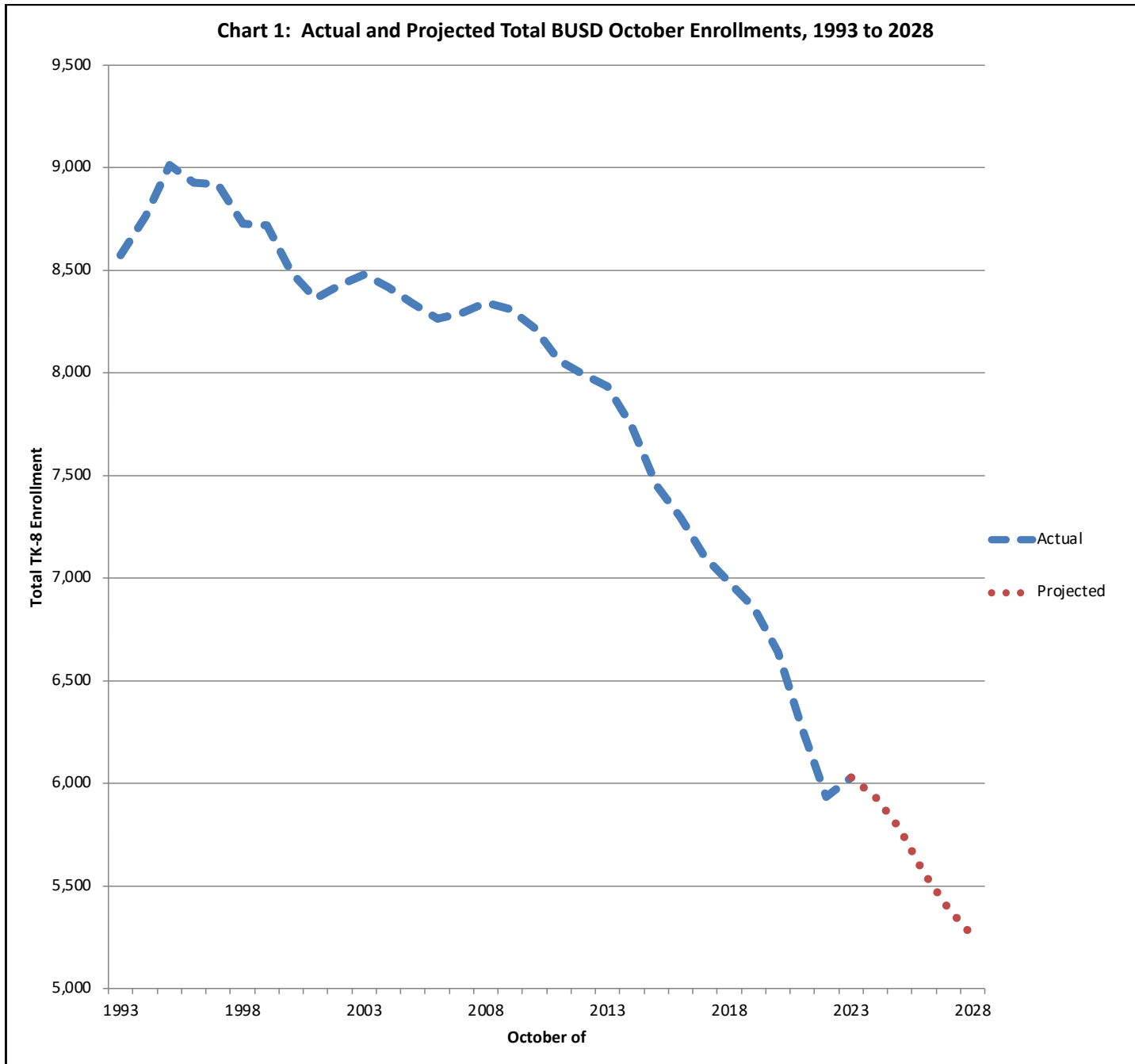
*May 9, 2024, Committee Presentation*

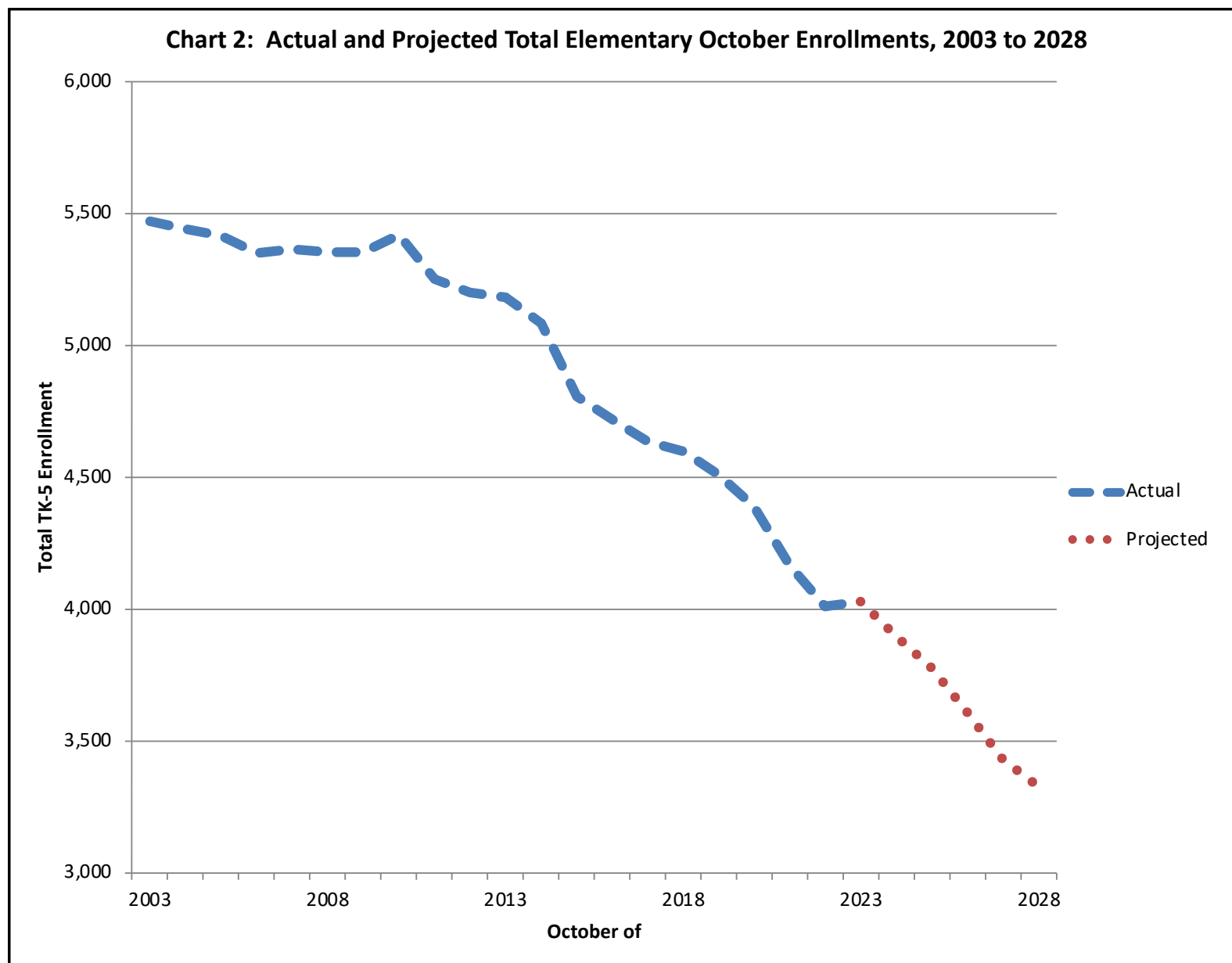
*by Thomas Williams of*

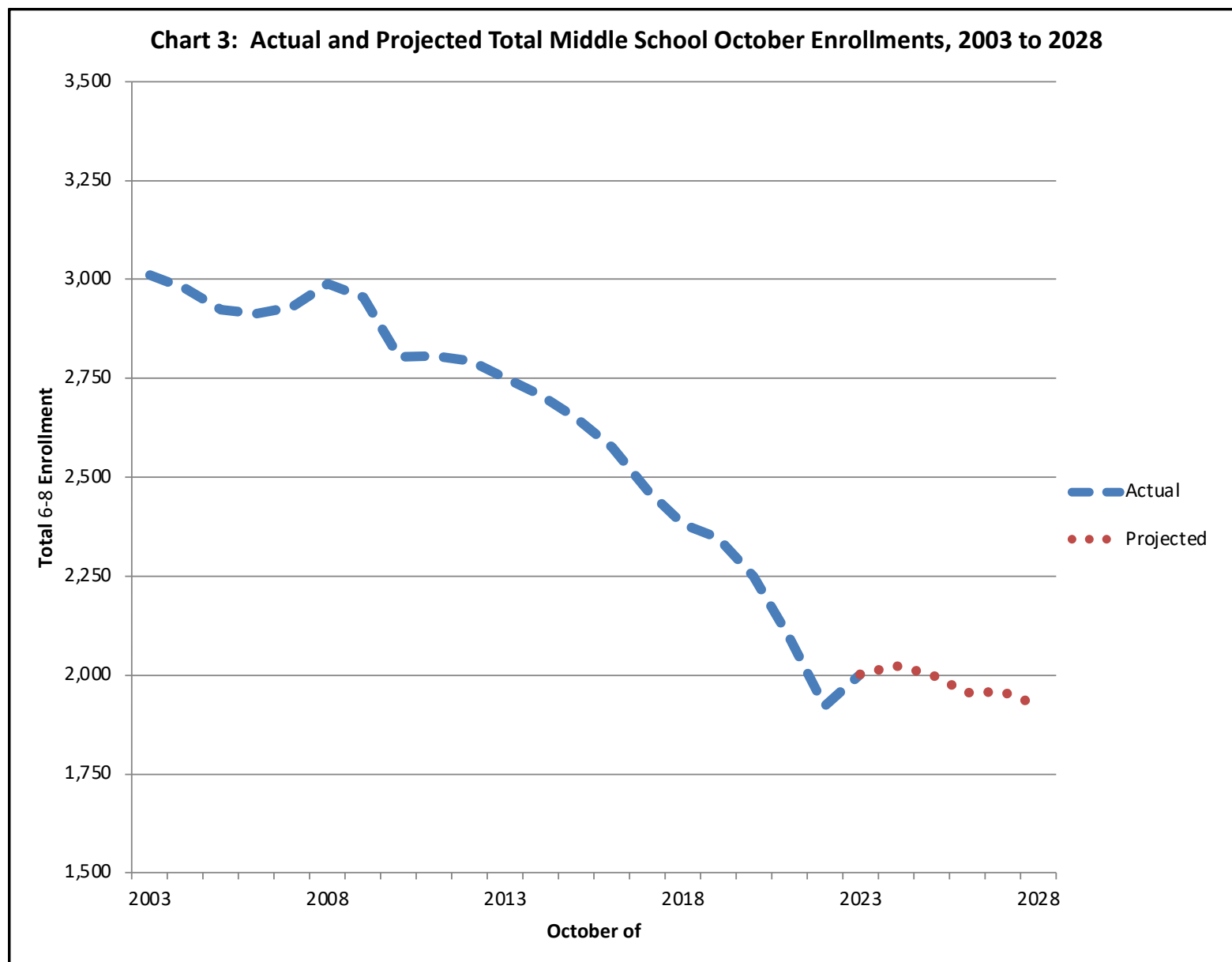
*Enrollment Projection Consultants*

## PROJECTIONS SUMMARY

- (1) After a significant total enrollment decline during the main pandemic-impacted years, enrollment in the Berryessa Union School District (henceforth “BUSD” or “district”) rebounded slightly this year, just as occurred in most of our client districts. That rebound, however, only offsets a small part of the prior reductions, as some students evidently came back to BUSD schools from private schools, home schooling and/or temporarily living elsewhere. Such returning students are unlikely to be in sufficient additional future numbers to end the long-term trend of total district enrollment decline, especially considering how low both the current kindergarten total and the local birth figures are.
- (2) The projected total October enrollments, compared to the current figure, decline by 107 to next fall, 464 in three years and nearly 800 in five years. As significant as these reductions are, they are at a slower rate than the net loss of over 800 students in the district October total since 2019 (four years). A key difference between the reductions (1) from 2016 to 2021 and (2) in the projected amounts, however, is that large eighth grade classes graduated in those past years, while the expected decline occurs mainly due to small kindergarten totals.
- (3) The pending losses are concentrated at the elementary level accordingly. The projected reduction for next year (i.e., from the current enrollment to that on October 1, 2024) is entirely in the elementary total, with a loss of 128 students. The projected middle school total instead rises by 21 due to a larger class now in fifth grade (next year’s sixth graders) than in the graduating eighth grade class. Thereafter the projected middle school total also declines, but at a much slower rate than for the elementary total. The net losses forecast over the next three years are by 417 elementary and 47 middle school students. The estimates for five years hence are to have 699 fewer elementary students and just 77 fewer middle school students.







**Table 1 for BUSD May 9, 2024, Committee Presentation (page 1 of 2)**  
**Actual and Estimated Students by Grade and Grade Level, October of 2016 to 2028**

Subject	Actual and Estimated October Enrollment by Grade (including SDC)										Actual and Estimated October Enrollment by Grade Group		
	TK	K	1	2	3	4	5	6	7	8	TK-5	6-8	Total
<b>Actual October Enrollments</b>													
<b>2016</b>	145	735	720	760	804	758	798	800	878	898	4,720	2,576	7,296
<b>2017</b>	144	712	735	722	760	806	756	789	827	850	4,635	2,466	7,101
<b>2018</b>	120	754	735	742	716	739	793	771	781	830	4,599	2,382	6,981
<b>2019</b>	120	707	787	737	728	710	721	813	768	766	4,510	2,347	6,857
<b>2020</b>	94	678	723	771	724	701	698	707	786	756	4,389	2,249	6,638
<b>2021</b>	111	673	661	659	712	689	665	658	674	764	4,170	2,096	6,266
<b>2022</b>	114	562	682	664	629	672	688	640	628	653	4,011	1,921	5,932
<b>2023</b>	210	531	611	682	673	656	665	697	668	637	4,028	2,002	6,030
<b>Actual Change, October 2016 to October 2019 (ThreeYears)</b>											<b>-210</b>	<b>-229</b>	<b>-439</b>
<b>Actual Change, October 2019 to October 2022 (Three Years)</b>											<b>-499</b>	<b>-426</b>	<b>-925</b>
<b>Actual Change, October 2022 to October 2023 (One Year)</b>											<b>17</b>	<b>81</b>	<b>98</b>

**Table 1 for BUSD May 9, 2024, Committee Presentation (page 2 of 2)**  
**Actual and Estimated Students by Grade and Grade Level, October of 2016 to 2028**

Subject	Actual and Estimated October Enrollment by Grade (including SDC)										Actual and Estimated October Enrollment by Grade Group		
	TK	K	1	2	3	4	5	6	7	8	TK-5	6-8	Total
<b>Actual October Enrollments</b>													
<b>2023</b>	210	531	611	682	673	656	665	697	668	637	4,028	2,002	6,030
<b>Estimated October Enrollments</b>													
<b>2024</b>	210	532	558	613	677	667	643	661	699	663	3,900	2,023	5,923
<b>2025</b>	227	478	563	563	612	675	659	641	664	698	3,777	2,003	5,780
<b>2026</b>	224	473	506	568	563	610	667	653	642	660	3,611	1,955	5,566
<b>2027</b>	222	468	500	511	567	560	604	665	653	640	3,432	1,958	5,390
<b>2028</b>	226	476	495	505	510	563	554	609	667	649	3,329	1,925	5,254
<b>Total Estimated Grade-Level Enrollment Change in One Year, to October 2024</b>											<b>-128</b>	<b>21</b>	<b>-107</b>
<b>Total Estimated Grade-Level Enrollment Change in Two Years, to October 2025</b>											<b>-251</b>	<b>1</b>	<b>-250</b>
<b>Total Estimated Grade-Level Enrollment Change in Three Years, to October 2026</b>											<b>-417</b>	<b>-47</b>	<b>-464</b>
<b>Total Estimated Grade-Level Enrollment Change in Four Years, to October 2027</b>											<b>-596</b>	<b>-44</b>	<b>-640</b>
<b>Total Estimated Grade-Level Enrollment Change in Five Years, to October 2028</b>											<b>-699</b>	<b>-77</b>	<b>-776</b>

**Table 2 for BUSD May 9, 2024, Committee Presentation**  
**Comparison of Births in 95132 Zip Code Region to Corresponding Resident BUSD Kindergarten Students**

Birth Year and Kindergarten Enrollment Date	Total Births in Zip Code 95132	BUSD-Enrolled Resident Kindergarten Students	Ratio of BUSD Kindergarten Students to Births
"2011" Births and Fall 2016 Kindergartners	421	394	94%
"2012" Births and Fall 2017 Kindergartners	461	410	89%
"2013" Births and Fall 2018 Kindergartners	479	420	88%
"2014" Births and Fall 2019 Kindergartners	456	368	81%
"2015" Births and Fall 2020 Kindergartners	442	336	76%
"2016" Births and Fall 2021 Kindergartners	451	348	77%
"2017" Births and Fall 2022 Kindergartners	438	275	63%
"2018" Births and Fall 2023 Kindergartners (current ratio)	427	257	60%
<i>Average Relevant to Kindergarten in Fall of 2016 to 2019</i>			<b>88%</b>
<b>Average Relevant to Kindergarten Since Fall 2019 (poor correlation in 17% range from 60% to 77%)</b>			<b>69%</b>

	note how all totals below are less than any above and are declining	Potential BUSD-Enrolled Resident Kindergartners	
		at Four-Year Average Ratio	at Current Ratio
"2019" Births and Potential October 2024 Kindergartners	399	275	240
"2020" Births and Potential October 2025 Kindergartners	336	232	202
"2021" Births and Potential October 2026 Kindergartners	347	240	209
"2022" Births and Potential October 2027 Kindergartners	332	229	200

Note: Birth years in quotes are proportionate birth amounts in the listed year and prior year so as to better correlate to the kindergarten eligibility period shown, such as "2011" births representing four-twelfths of the birth total in 2010 and eight-twelfths (all but September through December) of the birth total in 2011.

## Elementary Attendance Areas (All of BUSD)

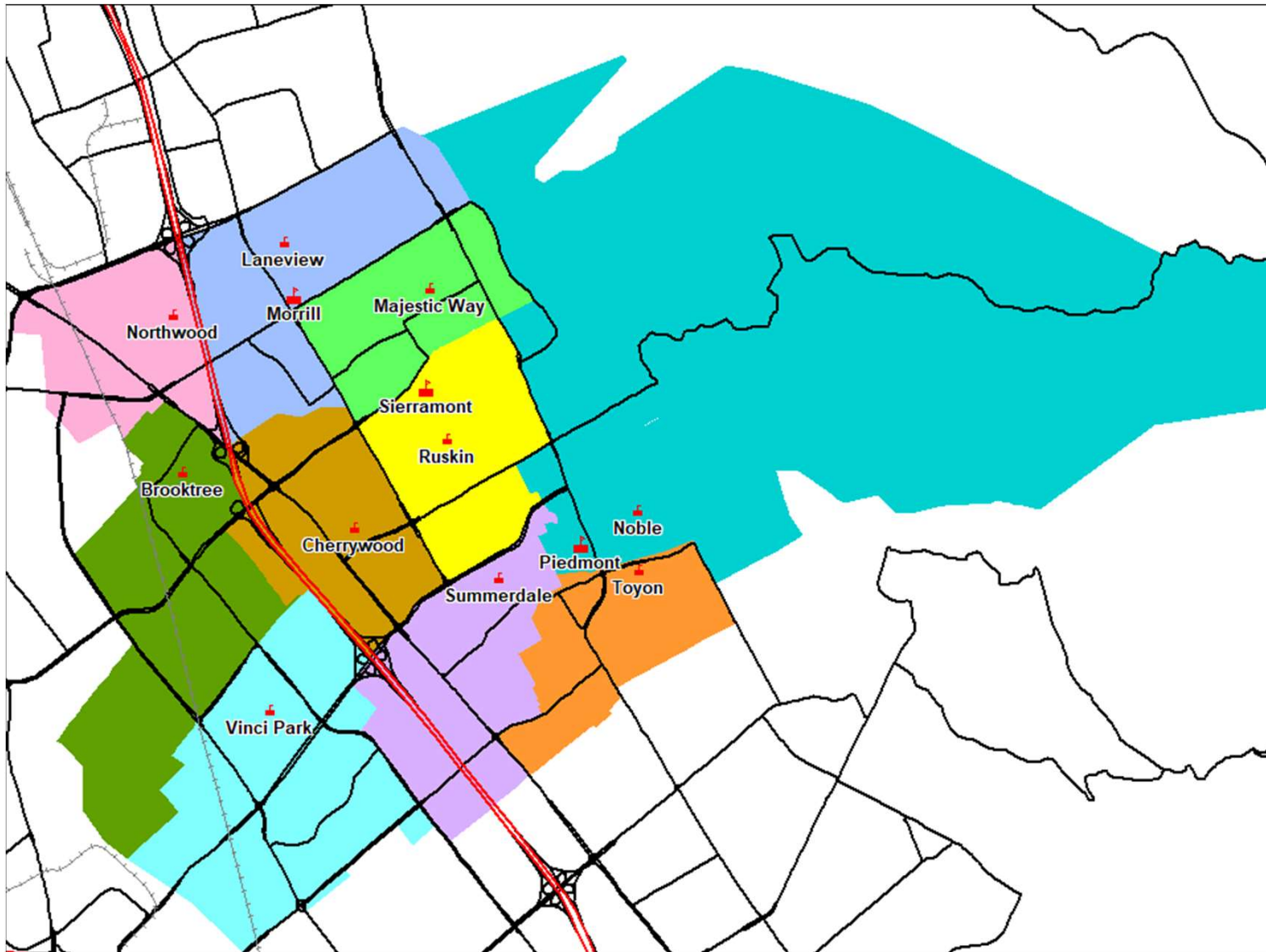


Chart 4 for May 9, 2024, Committee Meeting:  
Actual and Projected BUSD TK-5 Students in Current West-of-I-880 Elementary School Areas

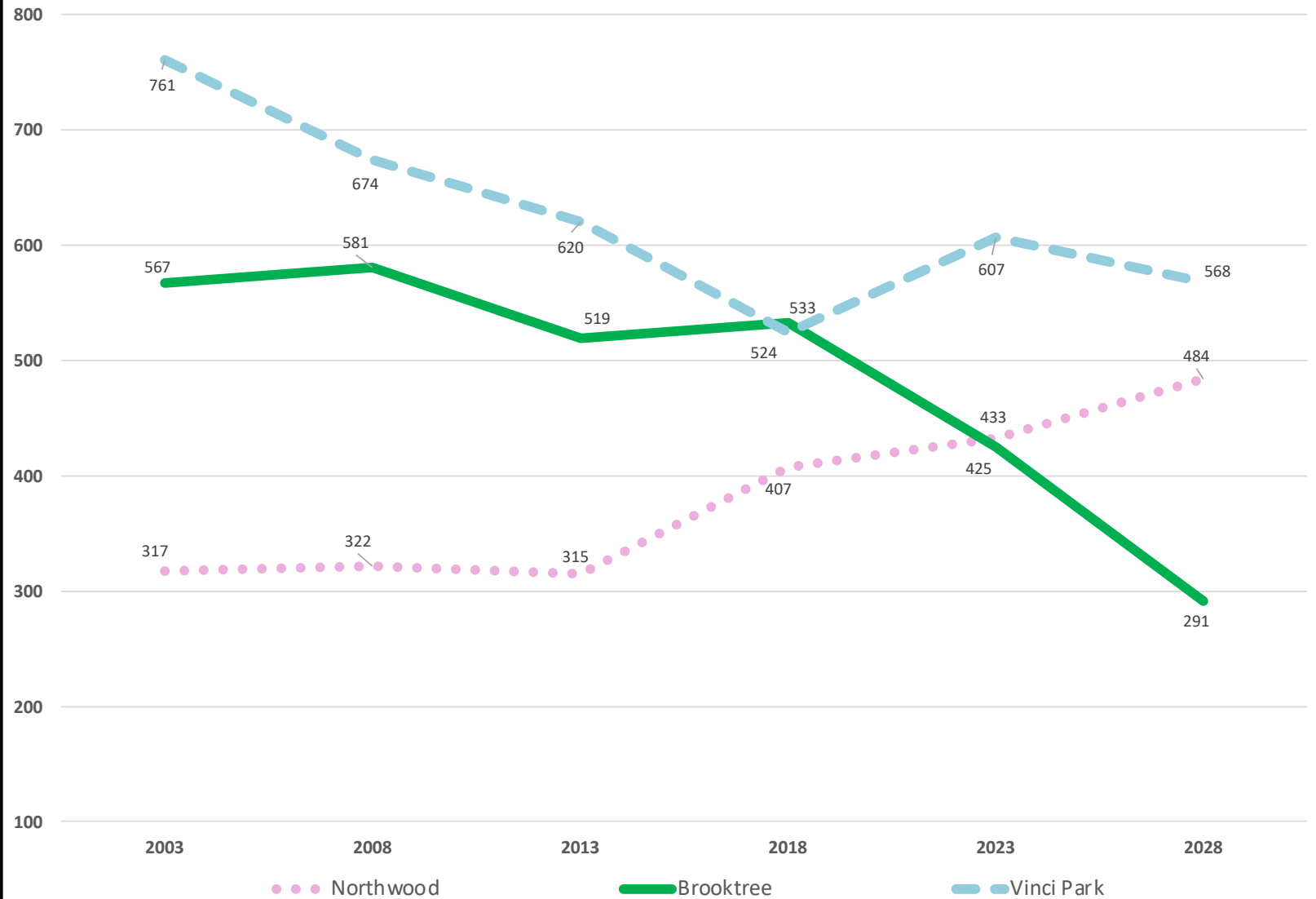


Chart 5 for May 9, 2024, Committee Meeting:  
Actual and Projected BUSD TK-5 Students in Current NE and Central Elementary School Areas

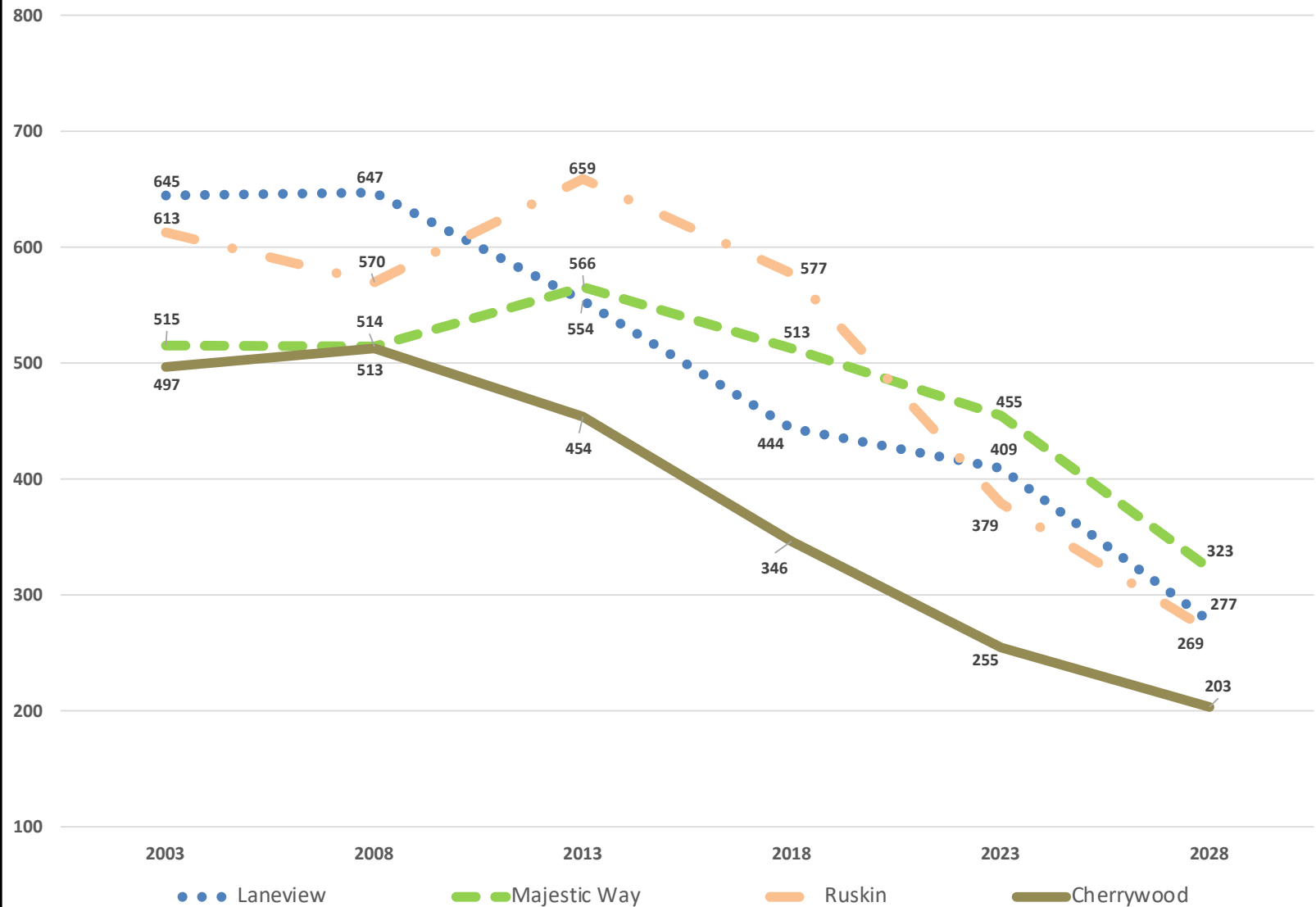
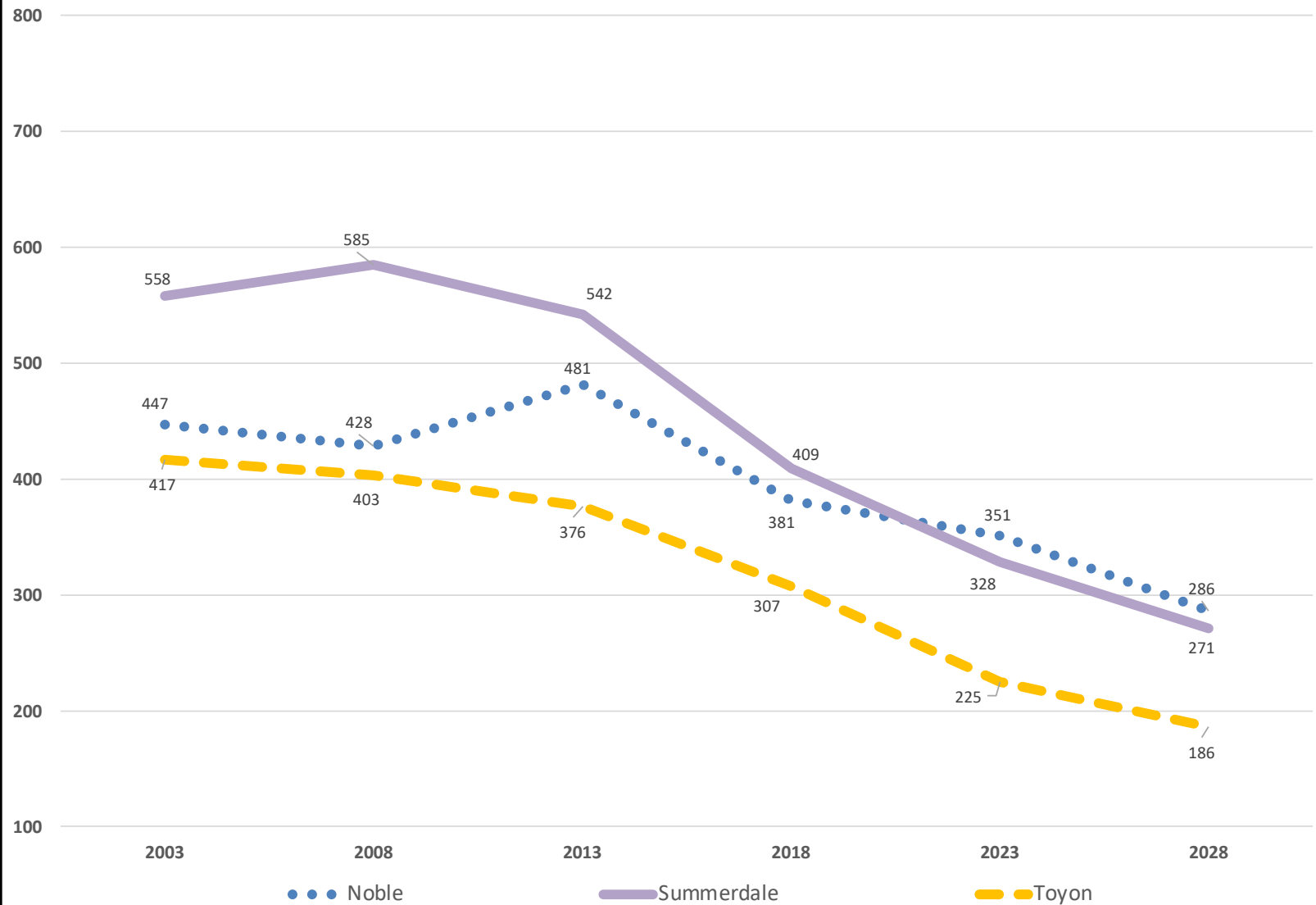


Chart 6 for May 9, 2024, Committee Meeting:  
Actual and Projected BUSD TK-5 Students in Current Southeast Elementary School Areas



## Middle School Attendance Areas (All of BUSD)

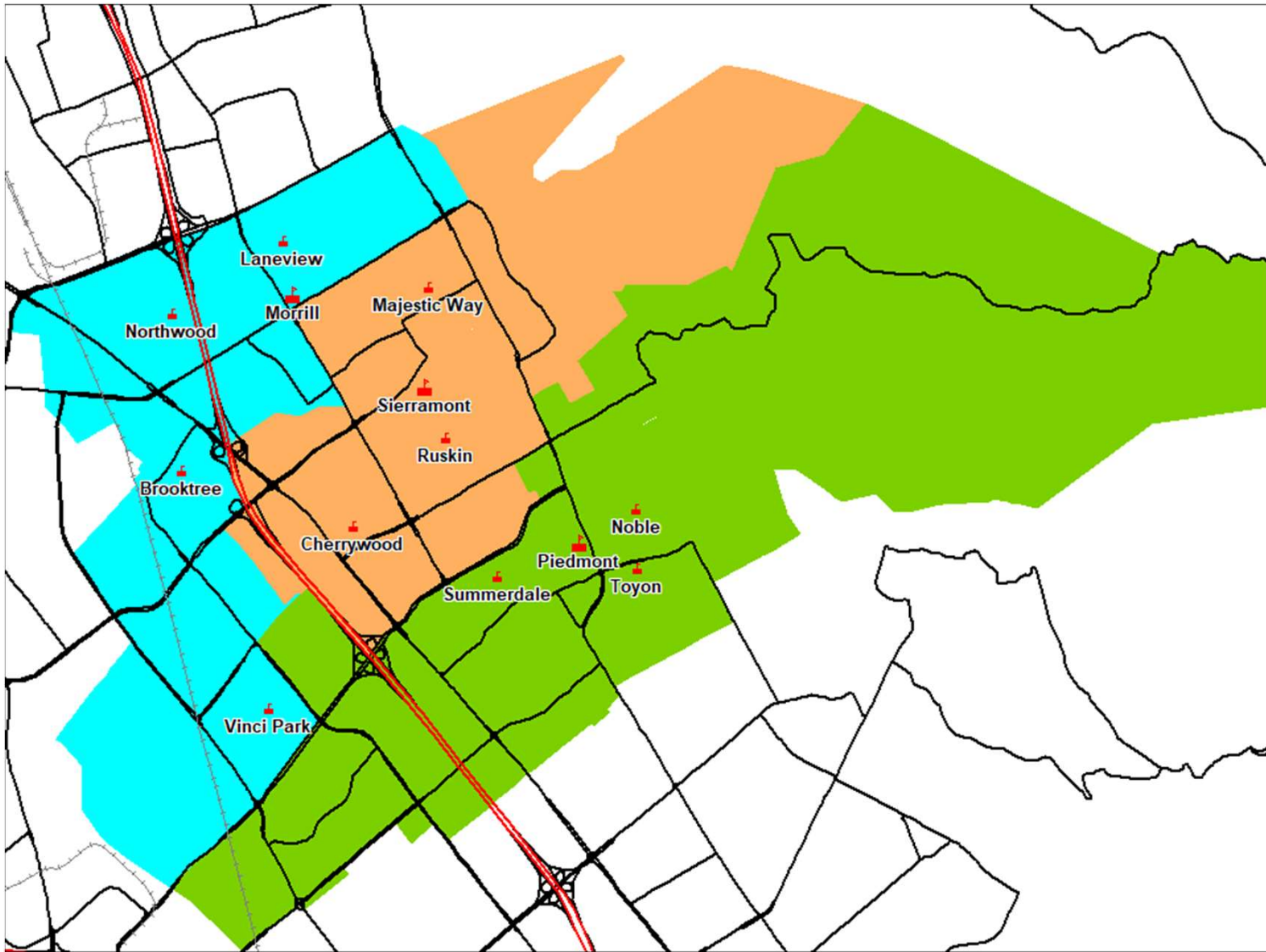


Chart 7 for May 9, 2024, Committee Meeting:  
Actual and Projected BUSD 6-8 Students in Current Middle School Areas

